

LISTINO RACCORDI PER TUBI FLESSIBILI ISO 12151 - SAE J516

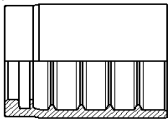


2022

INDICE

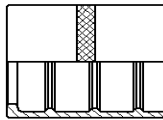
Pagina 1	Boccole a pressare
Pagina 2	Raccordi cono 60° MD - FD - F90 - F45
Pagina 3	Raccordi cono 60° con dado spinato FD - F90 - F45
Pagina 4	Filetto Metrico Cilindrico MD - FD - F90 - F45
Pagina 5	Raccordi cono JIC 37° M - FD - F90 - F45
Pagina 6	Raccordi cono JIC 37° con dado spinato FD - F45 - F90
Pagina 7	Serie L/S
Pagina 8	Serie L/S
Pagina 9	Serie ORFS
Pagina 10	Occhielli - Viti cave
Pagina 11	Serie 3000 - Serie 6000
Pagina 12	Serie 6000 - Accessori
Pagina 13	INTERLOCK : boccole - raccordi Gas
Pagina 14	INTERLOCK : JIC 37° - Serie S
Pagina 15	INTERLOCK : ORFS - Serie 3000
Pagina 16	INTERLOCK : Serie 6000

BOCCOLA A PRESSARE NON SKIVE
PER TUBO R1AT/1SN-R2AT/2SN-2SC
4174..2



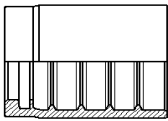
Codice	Øinterno tubo	Tipo tubo	Netto €/cad.
4174032	3/16	R1AT/1SN R2AT/2SN	
4174042	1/4	R1AT/1SN R2AT/2SN	
4174052	5/16	R1AT/1SN R2AT/2SN	
4174062	3/8	R1AT/1SN R2AT/2SN	
4174082	1/2	R1AT/1SN R2AT/2SN	
4174102	5/8	R1AT/1SN R2AT/2SN	
4174122	3/4	R1AT/1SN R2AT/2SN	
4174162	1	R1AT/1SN R2AT/2SN	
4174202	1.1/4	R1AT/1SN R2AT/2SN	
4174242	1.1/2	R1AT/1SN R2AT/2SN	
4174322	2	R1AT/1SN R2AT/2SN	

BOCCOLA A PRESSARE
PER TUBO R6-R7-R8
4177..2



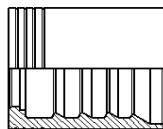
Codice	Øinterno tubo	Tipo tubo	Netto €/cad.
4177032	3/16	R6-R7 R8	
4177042	1/4	R6-R7 R8	
4177052	5/16	R6-R7 R8	
4177062	3/8	R6-R7 R8	
4177082	1/2	R6-R7 R8	
4177102	5/8	R6-R7 R8	
4177122	3/4	R6-R7 R8	
4177162	1	R6-R7 R8	

BOCCOLA A PRESSARE
PER TUBO 1SC
4168..2



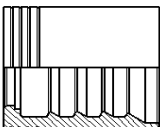
Codice	Øinterno tubo	Tipo tubo	Netto €/cad.
4168042	1/4	1SC	
4168052	5/16	1SC	
4168062	3/8	1SC	
4168082	1/2	1SC	
4168102	5/8	1SC	
4168122	3/4	1SC	
4168162	1	1SC	

BOCCOLA A PRESSARE SKIVE
PER TUBO 4SP/R9R/R2A
4176..2



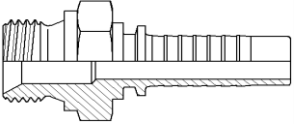
Codice	Øinterno tubo	Tipo tubo	Netto €/cad.
4176042	1/4	4SP	
4176062	3/8	4SP	
4176082	1/2	4SP	
4176102	5/8	4SP	
4176122	3/4	4SP	
4176162	1	4SP	

BOCCOLA A PRESSARE SKIVE
PER TUBO 4SH
4176122



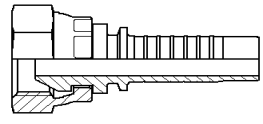
Codice	Øinterno tubo	Tipo tubo	Netto €/cad.
4176122	3/4	4SH	
4176162	1	4SH	
4164202	1.1/4	4SH	
4164242	1.1/2	4SH	
4164322	2	4SH	

MASCHIO SV.60°
 Filetto gas cilindrico
 42..20./42..2A.



Codice	Øinterno tubo	Filetto G		Netto €/cad.
4203201	3/16	1/8		
4203202	3/16	1/4		
42042A0	1/4	1/8		
4204201	1/4	1/4		
4204202	1/4	3/8		
4204203	1/4	1/2		
4205201	5/16	3/8		
4206203	3/8	1/4		
4206201	3/8	3/8		
4206202	3/8	1/2		
42082A0	1/2	3/8		
4208201	1/2	1/2		
4208202	1/2	5/8		
4208203	1/2	3/4		
4210201	5/8	5/8		
4210202	5/8	3/4		
4212201	3/4	3/4		
4212202	3/4	1		
4216201	1	1		
4216202	1	1.1/4		
4220201	1.1/4	1.1/4		
4224201	1.1/2	1.1/2		
4232201	2	2		

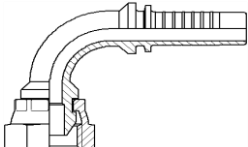
FEMM CONO 60° DADO PRESSATO
 Filetto gas cilindrico
 42..21./42..29.



Codice	Øinterno tubo	Filetto G		Netto €/cad.
4203212	3/16	1/8		
4203213	3/16	1/4		
4204292	1/4	1/8		
4204212	1/4	1/4		
4204213	1/4	3/8		
4204214	1/4	1/2		
4205214	5/16	1/4		
4205212	5/16	3/8		
4206214	3/8	1/4		
4206212	3/8	3/8		
4206213	3/8	1/2		
4208295	1/2	3/8		
4208212	1/2	1/2		
4208213	1/2	5/8		
4208292	1/2	3/4		
4210214	5/8	1/2		
4210212	5/8	5/8		
4210213	5/8	3/4		
4212212	3/4	3/4		
4212213	3/4	1		
4216212	1	1		
4216213DP	1	1.1/4		
4220212DP	1.1/4	1.1/4		
4220213DP	1.1/4	1.1/2		
4224212DP	1.1/2	1.1/2		
4224213DP	1.1/2	2		
4232212DP	2	2		

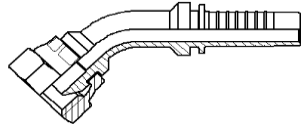
DP = dado pressato / rolled nut

FEMMINA 90° CONO 60° CON DADO PRESSATO
 Filetto gas cilindrico
 42..22./42..29.



Codice	Øinterno tubo	Filetto G		Netto €/cad.
4203223	3/16	1/8		
4203224	3/16	1/4		
4204294	1/4	1/8		
4204223	1/4	1/4		
4204224	1/4	3/8		
4204295	1/4	1/2		
4205223	5/16	3/8		
4206223	3/8	3/8		
4206224	3/8	1/2		
4208223	1/2	1/2		
4208224	1/2	5/8		
4208294	1/2	3/4		
4210223	5/8	5/8		
4210224	5/8	3/4		
4212223	3/4	3/4		
4212224	3/4	1		
4216223	1	1		
4216224DP	1	1.1/4		
4220223DP	1.1/4	1.1/4		
4220224DP	1.1/4	1.1/2		
4224223DP	1.1/2	1.1/2		

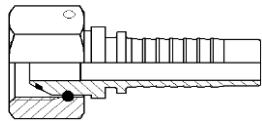
FEMMINA 45° CONO 60° CON DADO PRESSATO
 Filetto gas cilindrico
 42..23./42..29.



Codice	Øinterno tubo	Filetto G		Netto €/cad.
4203232	3/16	1/8		
4203233	3/16	1/4		
4204293	1/4	1/8		
4204232	1/4	1/4		
4204233	1/4	3/8		
4205232	5/16	3/8		
4206232	3/8	3/8		
4206233	3/8	1/2		
4208232	1/2	1/2		
4208233	1/2	5/8		
4210232	5/8	5/8		
4210233	5/8	3/4		
4212232	3/4	3/4		
4212233	3/4	1		
4216232	1	1		
4220232DP	1.1/4	1.1/4		
4224232DP	1.1/2	1.1/2		
4232232DP	2	2		

DP = dado pressato / rolled nut

FEM CONO 60° DADO SPINATO
 Filetto gas cilindrico
 42..2C./42..21.



Codice	Øinterno tubo	Filetto G		Netto €/cad.
42032C0	3/16	1/8		
42032C1	3/16	1/4		
R	1/4	1/8		
42042C0	1/4	1/4		
42042C1	1/4	3/8		
R	1/4	1/2		
42052C3	5/16	1/4		
42052C0	5/16	3/8		
R	5/16	1/2		
R	3/8	1/4		
42062C0	3/8	3/8		
42062C1	3/8	1/2		
R	1/2	3/8		
42082C0	1/2	1/2		
42082C1	1/2	5/8		
42082C2	1/2	3/4		
42102C0	5/8	5/8		
42102C1	5/8	3/4		
R	3/4	5/8		
42122C0	3/4	3/4		
42122C1	3/4	1		
42162C2	1	3/4		
42162C0	1	1		
4216213DS	1	1.1/4		
4220212DS	1.1/4	1.1/4		
4220213DS	1.1/4	1.1/2		
4224212DS	1.1/2	1.1/2		
4224213DS	1.1/2	2		
4232212DS	2	2		

DS = dado spinato / thrust wire

FEM 90° CONO 60° DADO SPINATO
 Filetto gas cilindrico
 42..2E./42..22.



Codice	Øinterno tubo	Filetto G		Netto €/cad.
42032E0	3/16	1/8		
42032E1	3/16	1/4		
R	1/4	1/8		
42042E0	1/4	1/4		
42042E1	1/4	3/8		
R	1/4	1/2		
R	5/16	1/4		
42052E0	5/16	3/8		
R	5/16	1/2		
R	3/8	1/4		
42062E0	3/8	3/8		
42062E1	3/8	1/2		
R	1/2	3/8		
42082E0	1/2	1/2		
42082E1	1/2	5/8		
42082E2	1/2	3/4		
42102E0	5/8	5/8		
42102E1	5/8	3/4		
42122E0	3/4	3/4		
42122E1	3/4	1		
42162E2	1	3/4		
42162E0	1	1		
4216224DS	1	1.1/4		
4220223DS	1.1/4	1.1/4		
4220224DS	1.1/4	1.1/2		
4224223DS	1.1/2	1.1/2		
4224224DS	1.1/2	2		
4232223DS	2	2		

DS = dado spinato / thrust wire

FEM 45° CONO 60° DADO SPINATO
 Filetto gas cilindrico
 42..2F./42..23.



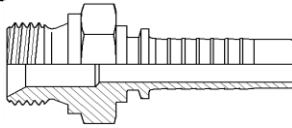
Codice	Øinterno tubo	Filetto G		Netto €/cad.
42032F0	3/16	1/8		
42032F1	3/16	1/4		
R	1/4	1/8		
42042F0	1/4	1/4		
42042F1	1/4	3/8		
R	1/4	1/2		
R	5/16	1/4		
42052F0	5/16	3/8		
R	5/16	1/2		
R	3/8	1/4		
42062F0	3/8	3/8		
42062F1	3/8	1/2		
R	1/2	3/8		
42082F0	1/2	1/2		
42082F1	1/2	5/8		
42082F2	1/2	3/4		
42122F1	3/4	1		
42162F0	1	1		
4216233DS	1	1.1/4		
4220232DS	1.1/4	1.1/4		
4220233DS	1.1/4	1.1/2		
4224232DS	1.1/2	1.1/2		
4224233DS	1.1/2	2		
4232232DS	2	2		

DS = dado spinato / thrust wire

MASCHIO SV.60°

Filetto metrico cilindrico

42..27./42..20./42..2A.

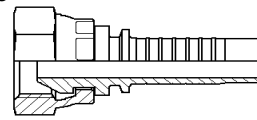


Codice	Øinterno tubo	Filetto M		Netto €/cad.
4203276	3/16	10x1		
4203207	3/16	12x1,5		
42042A3	1/4	10x1		
4204206	1/4	12x1,5		
4204207	1/4	14x1,5		
4204208	1/4	16x1,5		
R	1/4	18x1,5		
4205208	5/16	14x1,5		
4205206	5/16	16x1,5		
4205207	5/16	18x1,5		
42062A2	3/8	14x1,5		
4206206	3/8	16x1,5		
4206207	3/8	18x1,5		
4206208	3/8	20x1,5		
42062A3	3/8	22x1,5		
4208206	1/2	18x1,5		
4208207	1/2	20x1,5		
4208208	1/2	22x1,5		
42082A2	1/2	24x1,5		
R	1/2	26x1,5		
42102A2	5/8	24x1,5		
4210208	5/8	26x1,5		
4210207	5/8	30x1,5		
4212206	3/4	26x1,5		
4212207	3/4	30x1,5		
4216206	1	38x1,5		
4220206	1.1/4	45x1,5		

FEM CONO 60° DADO PRESSATO

Filetto metrico cilindrico

42..21./42..28.

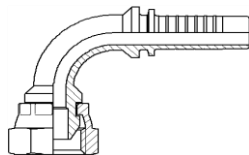


Codice	Øinterno tubo	Filetto M		Netto €/cad.
4203284	3/16	10x1		
4203216	3/16	12x1,5		
4203217	3/16	14x1,5		
4204284	1/4	10x1		
4204215	1/4	12x1,5		
4204216	1/4	14x1,5		
4204217	1/4	16x1,5		
4204218	1/4	18x1,5		
4205217	5/16	14x1,5		
4205215	5/16	16x1,5		
4205216	5/16	18x1,5		
4206219	3/8	14x1,5		
4206215	3/8	16x1,5		
4206216	3/8	18x1,5		
4206217	3/8	20x1,5		
4206218	3/8	22x1,5		
R	1/2	16x1,5		
4208216	1/2	18x1,5		
4208218	1/2	20x1,5		
4208217	1/2	22x1,5		
4208215	1/2	24x1,5		
4208219	1/2	26x1,5		
4210215	5/8	22x1,5		
4210216	5/8	24x1,5		
4210217	5/8	26x1,5		
4210218	5/8	30x1,5		
4212215	3/4	26x1,5		
4212216	3/4	30x1,5		
4216215	1	30x1,5		
4216217	1	38x1,5		
4220215	1.1/4	45x1,5		

FEMMINA 90° CONO 60° CON DADO PRESSATO

Filetto metrico cilindrico

42..22./42..21.

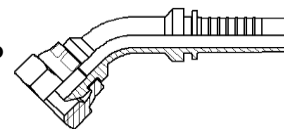


Codice	Øinterno tubo	Filetto M		Netto €/cad.
4203225	3/16	10x1		
4203226	3/16	12x1,5		
R	1/4	10x1		
4205226	5/16	18x1,5		
4206216	3/8	14x1,5		
4206225	3/8	16x1,5		
4206226	3/8	18x1,5		
4206227	3/8	20x1,5		
4206228	3/8	22x1,5		
4208226	1/2	18x1,5		
4208225	1/2	20x1,5		
4208227	1/2	22x1,5		
4208228	1/2	24x1,5		
R	1/2	26x1,5		
4210227	5/8	26x1,5		
4210228	5/8	30x1,5		
4212225	3/4	26x1,5		
4212226	3/4	30x1,5		
4216226	1	30x1,5		
4216227	1	38x1,5		
4220226	1.1/4	45x1,5		

FEMMINA 45° CONO 60° CON DADO PRESSATO

Filetto metrico cilindrico

42..23./42..21.

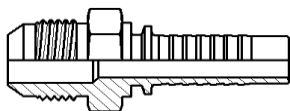


Codice	Øinterno tubo	Filetto M		Netto €/cad.
R	3/16	10x1		
4203235	3/16	12x1,5		
R	1/4	10x1		
4205235	5/16	18x1,5		
4206218	3/8	14x1,5		
4206234	3/8	16x1,5		
4206235	3/8	18x1,5		
4206236	3/8	20x1,5		
4206237	3/8	22x1,5		
4208235	1/2	18x1,5		
4208234	1/2	20x1,5		
4208236	1/2	22x1,5		
R	1/2	26x1,5		
4210236	5/8	26x1,5		
4210237	5/8	30x1,5		
4212234	3/4	26x1,5		
4212235	3/4	30x1,5		
R	1	38x1,5		
4220234	1.1/4	45x1,5		

MASCHIO CONO JIC 37°

Filetto UNF/UN

42..20./42..21./42..2J.



Codice	Ø interno tubo	Ø Tubo mm	Filetto JIC 37°	Netto €/cad.
4204209	1/4	6	7/16-20	
4204210	1/4	8	1/2-20	
4204211	1/4	10	9/16-18	
42052J9	5/16	8	1/2-20	
4205209	5/16	10	9/16-18	
4206209	3/8	10	9/16-18	
4206211	3/8	12	3/4-16	
42062J9	3/8	14-15-16	7/8-14	
4208209	1/2	12	3/4-16	
4208210	1/2	14-15-16	7/8-14	
4208211	1/2	18-20	1.1/16-12	
4210209	5/8	14-15-16	7/8-14	
4210210	5/8	18-20	1.1/16-12	
4212209	3/4	18-20	1.1/16-12	
4212211	3/4	25	1.5/16-12	
4216209	1	25	1.5/16-12	
4216210	1	30-32	1.5/8-12	
4220209	1.1/4	30-32	1.5/8-12	
4220210	1.1/4	38	1.7/8-12	
4224209	1.1/2	38	1.7/8-12	
4232209	2	50	2.1/2-12	

FEMMINA CONO JIC 37° CON DADO PRESSATO

Filetto UNF/UN

42..22./42..2J.

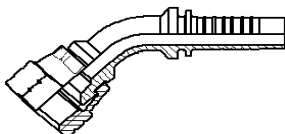


Codice	Ø interno tubo	Filetto JIC 37°	Netto €/cad.
4203220	3/16	7/16-20	
4204220	1/4	7/16-20	
4204221	1/4	1/2-20	
4204222	1/4	9/16-18	
42052J0	5/16	1/2-20	
4205220	5/16	9/16-18	
4205222	5/16	3/4-16	
4206220	3/8	9/16-18	
4206221	3/8	5/8-18	
4206222	3/8	3/4-16	
42062J2	3/8	7/8-14	
4208220	1/2	3/4-16	
4208221	1/2	7/8-14	
4208222	1/2	1.1/16-12	
4210220	5/8	7/8-14	
4210221	5/8	1.1/16-12	
4212220	3/4	1.1/16-12	
4212222	3/4	1.5/16-12	
4216220	1	1.5/16-12	

FEMMINA 45° CONO JIC 37° DADO PRESSATO

Filetto UNF/UN

42..23./42..24./42..2J.

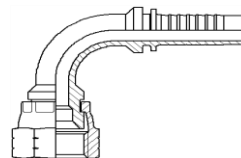


Codice	Ø interno tubo	Filetto JIC 37°	Netto €/cad.
4204238	1/4	7/16-20	
4204239	1/4	1/2-20	
4204240	1/4	9/16-18	
4205238	5/16	9/16-18	
4206238	3/8	9/16-18	
4206240	3/8	3/4-16	
4208238	1/2	3/4-16	
4208239	1/2	7/8-14	
4208240	1/2	1.1/16-12	
4210238	5/8	7/8-14	
4210239	5/8	1.1/16-12	
4212238	3/4	1.1/16-12	
4212239	3/4	1.5/16-12	
4216238	1	1.5/16-12	

FEMMINA 90° CONO JIC 37° DADO PRESSATO

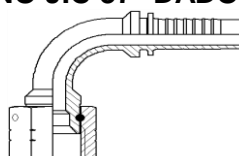
Filetto UNF/UN

42..22./42..23./42..2J.



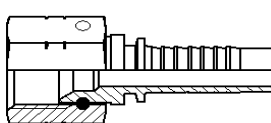
Codice	Ø interno tubo	Filetto JIC 37°	Netto €/cad.
4203229	3/16	7/16-20	
4204229	1/4	7/16-20	
4204230	1/4	1/2-20	
4204231	1/4	9/16-18	
42052J5	5/16	1/2-20	
4205229	5/16	9/16-18	
4206229	3/8	9/16-18	
4206230	3/8	5/8-18	
4206231	3/8	3/4-16	
4208229	1/2	3/4-16	
4208230	1/2	7/8-14	
4208231	1/2	1.1/16-12	
4210229	5/8	7/8-14	
4210230	5/8	1.1/16-12	
4212229	3/4	1.1/16-12	
4212231	3/4	1.5/16-12	
4216229	1	1.5/16-12	

FEMMINA 90° CONO JIC 37° DADO SPINATO
 Filetto UNF/UN
 42..2E./42..22./42..23.



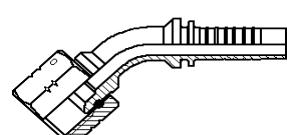
Codice	Øinterno tubo	Filetto JIC 37°	Netto €/cad.
42032E7	3/16	7/16-20	
R	3/16	1/2-20	
42042E7	1/4	7/16-20	
42042E8	1/4	1/2-20	
42042E9	1/4	9/16-18	
42052E7	5/16	9/16-18	
42062E7	3/8	9/16-18	
42062E6	3/8	5/8-18	
42062E8	3/8	3/4-16	
42062E9	3/8	7/8-14	
42082E7	1/2	3/4-16	
42082E8	1/2	7/8-14	
42082E9	1/2	1.1/16-12	
42102E7	5/8	7/8-14	
42102E8	5/8	1.1/16-12	
R	3/4	7/8-14	
42122E7	3/4	1.1/16-12	
42122E8	3/4	1.3/16-12	
42122E9	3/4	1.5/16-12	
42162E8	1	1.1/16-12	
42162E7	1	1.5/16-12	
4216230	1	1.5/8-12	
4220229	1.1/4	1.5/8-12	
4220230	1.1/4	1.7/8-12	
4224229	1.1/2	1.7/8-12	
4232229	2	2.1/2-12	

FEMMINA CONO JIC 37° CON DADO SPINATO
 Filetto UNF/UN
 42..2C./42..22.



Codice	Øinterno tubo	Filetto JIC 37°	Netto €/cad.
42032C7	3/16	7/16-20	
42042C7	1/4	7/16-20	
42042C8	1/4	1/2-20	
42042C9	1/4	9/16-18	
42052C7	5/16	9/16-18	
42062C7	3/8	9/16-18	
42062C8	3/8	3/4-16	
42062C9	3/8	7/8-14	
42082C7	1/2	3/4-16	
42082C8	1/2	7/8-14	
42082C9	1/2	1.1/16-12	
42102C7	5/8	7/8-14	
42102C8	5/8	1.1/16-12	
R	3/4	7/8-14	
42122C7	3/4	1.1/16-12	
42122C8	3/4	1.3/16-12	
42122C9	3/4	1.5/16-12	
R	1	1.1/16-12	
42162C7	1	1.5/16-12	
4216221	1	1.5/8-12	
4220220	1.1/4	1.5/8-12	
4220221	1.1/4	1.7/8-12	
4224220	1.1/2	1.7/8-12	
4232220	2	2.1/2-12	

FEMMINA 45° CONO JIC 37° DADO SPINATO
 Filetto UNF/UN
 42..2E./42..22./42..23.

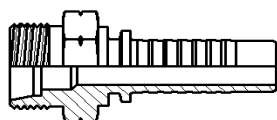


Codice	Øinterno tubo	Filetto JIC 37°	Netto €/cad.
42032F7	3/16	7/16-20	
R	3/16	1/2-20	
42042F7	1/4	7/16-20	
42042F8	1/4	1/2-20	
42042F9	1/4	9/16-18	
42052F7	5/16	9/16-18	
42062F7	3/8	9/16-18	
42062F8	3/8	3/4-16	
42062F9	3/8	7/8-14	
42082F7	1/2	3/4-16	
42082F8	1/2	7/8-14	
42082F9	1/2	1.1/16-12	
42102F7	5/8	7/8-14	
42102F8	5/8	1.1/16-12	
R	3/4	7/8-14	
42122F7	3/4	1.1/16-12	
42122F8	3/4	1.3/16-12	
42122F9	3/4	1.5/16-12	
42162F8	1	1.1/16-12	
42162F7	1	1.5/16-12	
4216240	1	1.5/8-12	
4220238	1.1/4	1.5/8-12	
4220239	1.1/4	1.7/8-12	
4224238	1.1/2	1.7/8-12	
4232238	2	2.1/2-12	

MASCHIO CONO 24°

SERIE L/S

42..27./42..28.



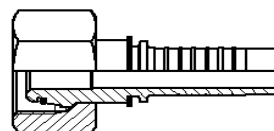
Codice	Ø interno tubo	Ø Tubo mm	Filetto M	Netto €/cad.
4203273	3/16	6L	12x1,5	
4204275	1/4	6L	12x1,5	
4204273	1/4	8L	14x1,5	
4204277	1/4	8S	16x1,5	
4204276	1/4	10L	16x1,5	
4204274	1/4	10S	18x1,5	
4204278	1/4	12L	18x1,5	
4205273	5/16	10L	16x1,5	
4205277	5/16	10S	18x1,5	
4205276	5/16	12L	18x1,5	
4205274	5/16	12S	20x1,5	
4206279	3/8	10L	16x1,5	
4206281	3/8	10S	18x1,5	
4206273	3/8	12L	18x1,5	
4206277	3/8	12S	20x1,5	
4206275	3/8	14S	22x1,5	
4206278	3/8	15L	22x1,5	
4208276	1/2	14S	22x1,5	
4208273	1/2	15L	22x1,5	
4208274	1/2	16S	24x1,5	
4208285	1/2	18L	26x1,5	
4210273	5/8	18L	26x1,5	
4210275	5/8	20S	30x2	
4212280	3/4	20S	30x2	
4212273	3/4	22L	30x2	
4212275	3/4	25S	36x2	
4216279	1	25S	36x2	
4216273	1	28L	36x2	
4216274	1	30S	42x2	
4220278	1.1/4	35L	45x2	
4220273	1.1/4	38S	52x2	
4224273	1.1/2	42L	52x2	

FEMMINA CONO 24° O-RING DADO

LIBERO

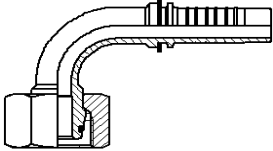
SERIE L/S

42..2.D



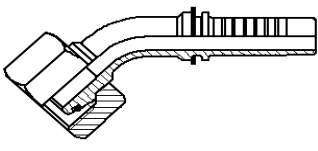
Codice	Ø interno tubo	Ø Tubo mm	Filetto M	Netto €/cad.
420326D	3/16	6L	12x1,5	
420423D	1/4	6L	12x1,5	
420426D	1/4	8L	14x1,5	
420428D	1/4	8S	16x1,5	
420427D	1/4	10L	16x1,5	
420429D	1/4	10S	18x1,5	
420424D	1/4	12L	18x1,5	
42042D1	1/4	12S	20x1,5	
420526D	5/16	10L	16x1,5	
420527D	5/16	12L	18x1,5	
420528D	5/16	12S	20x1,5	
420626D	3/8	10L	16x1,5	
420625D	3/8	10S	18x1,5	
420627D	3/8	12L	18x1,5	
420628D	3/8	12S	20x1,5	
420629D	3/8	14S	22x1,5	
420624D	3/8	15L	22x1,5	
420829D	1/2	14S	22x1,5	
420826D	1/2	15L	22x1,5	
420828D	1/2	16S	24x1,5	
420827D	1/2	18L	26x1,5	
421026D	5/8	18L	26x1,5	
421028D	5/8	20S	30x2	
421027D	5/8	22L	30x2	
421229D	3/4	20S	30x2	
421226D	3/4	22L	30x2	
421228D	3/4	25S	36x2	
421629D	1	25S	36x2	
421626D	1	28L	36x2	
421628D	1	30S	42x2	
422026D	1.1/4	35L	45x2	
422028D	1.1/4	38S	52x2	
422426D	1.1/2	42L	52x2	

FEM 90° CONO 24° O-RING E DADO LIBERO
SERIE L/S
42...2.N



Codice	Ø interno tubo	Ø Tubo mm	Filetto M	Netto €/cad.
420326N	3/16	6L	12x1,5	
420423N	1/4	6L	12x1,5	
420426N	1/4	8L	14x1,5	
420428N	1/4	8S	16x1,5	
420427N	1/4	10L	16x1,5	
420429N	1/4	10S	18x1,5	
420424N	1/4	12L	18x1,5	
420526N	5/16	10L	16x1,5	
420529N	5/16	10S	18x1,5	
420527N	5/16	12L	18x1,5	
420528N	5/16	12S	20x1,5	
420626N	3/8	10L	16x1,5	
420625N	3/8	10S	18x1,5	
420627N	3/8	12L	18x1,5	
420628N	3/8	12S	20x1,5	
420629N	3/8	14S	22x1,5	
420624N	3/8	15L	22x1,5	
420826N	1/2	15L	22x1,5	
420828N	1/2	16S	24x1,5	
421026N	5/8	18L	26x1,5	
421028N	5/8	20S	30x2	
421027N	5/8	22L	30x2	
421229N	3/4	20S	30x2	
421226N	3/4	22L	30x2	
421228N	3/4	25S	36x2	
421629N	1	25S	36x2	
421626N	1	28L	36x2	
421628N	1	30S	42x2	
422026N	1.1/4	35L	45x2	
422028N	1.1/4	38S	52x2	
422426N	1.1/2	42L	52x2	

FEM 45° CONO 24° O-RING E DADO LIBERO
SERIE L/S
42...2.Q

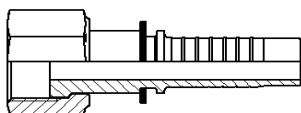


Codice	Ø interno tubo	Ø Tubo mm	Filetto M	Netto €/cad.
420326Q	3/16	6L	12x1,5	
420423Q	1/4	6L	12x1,5	
420426Q	1/4	8L	14x1,5	
420428Q	1/4	8S	16x1,5	
420427Q	1/4	10L	16x1,5	
420429Q	1/4	10S	18x1,5	
420526Q	5/16	10L	16x1,5	
420527Q	5/16	12L	18x1,5	
420528Q	5/16	12S	20x1,5	
420626Q	3/8	10L	16x1,5	
420627Q	3/8	12L	18x1,5	
420628Q	3/8	12S	20x1,5	
420629Q	3/8	14S	22x1,5	
420624Q	3/8	15L	22x1,5	
420826Q	1/2	15L	22x1,5	
420828Q	1/2	16S	24x1,5	
421026Q	5/8	18L	26x1,5	
421028Q	5/8	20S	30x2	
421229Q	3/4	20S	30x2	
421226Q	3/4	22L	30x2	
421228Q	3/4	25S	36x2	
421629Q	1	25S	36x2	
421626Q	1	28L	36x2	
421628Q	1	30S	42x2	
422026Q	1.1/4	35L	45x2	
422028Q	1.1/4	38S	52x2	
422426Q	1.1/2	42L	52x2	

FEMMINA ORFS CON DADO LIBERO

Filetto UNF/UN

42..Y.

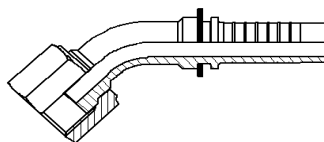


Codice	Ø interno tubo	Ø Tubo ORFS	Filetto ORFS	Netto €/cad.
42042Y0	1/4	6	9/16-18	
42042Y2	1/4	8-10	11/16-16	
42052Y0	5/16	8-10	11/16-16	
42062Y0	3/8	8-10	11/16-16	
42062Y2	3/8	12	13/16-16	
42082Y0	1/2	12	13/16-16	
42082Y2	1/2	14-15-16	1-14	
42082Y3	1/2	18-20	1.3/16-12	
42102Y0	5/8	14-15-16	1-14	
42122Y0	3/4	18-20	1.3/16-12	
42122Y2	3/4	22-25	1.7/16-12	
42162Y0	1	22-25	1.7/16-12	
42202Y0	1.1/4	28-30-32	1.11/16-12	

FEMMINA 45° ORFS DADO LIBERO

Filetto UNF/UN

42..Y.

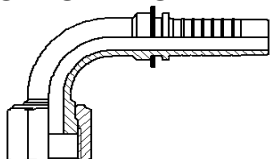


Codice	Ø interno tubo	Ø Tubo ORFS	Filetto ORFS	Netto €/cad.
42042Y7	1/4	6	9/16-18	
42042Y9	1/4	8-10	11/16-16	
42062Y7	3/8	8-10	11/16-16	
42062Y8	3/8	12	13/16-16	
42082Y7	1/2	12	13/16-16	
42082Y9	1/2	14-15-16	1-14	
42102Y7	5/8	14-15-16	1-14	
42122Y7	3/4	18-20	1.3/16-12	
42122Y9	3/4	22-25	1.7/16-12	
42162Y7	1	22-25	1.7/16-12	
42202Y7	1.1/4	28-30-32	1.11/16-12	
42242Y7	1.1/2	35-38	2-12	

FEMMINA 90° ORFS DADO LIBERO

Filetto UNF/UN

42..Y.

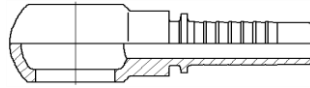


Codice	Ø interno tubo	Ø Tubo ORFS	Filetto ORFS	Netto €/cad.
42042Y4	1/4	6	9/16-18	
42042Y6	1/4	8-10	11/16-16	
42052Y4	5/16	8-10	11/16-16	
42062Y4	3/8	8-10	11/16-16	
42062Y6	3/8	12	13/16-16	
42082Y4	1/2	12	13/16-16	
42102Y4	5/8	14-15-16	1-14	
42122Y4	3/4	18-20	1.3/16-12	
42122Y6	3/4	22-25	1.7/16-12	
42162Y4	1	22-25	1.7/16-12	
42202Y4	1.1/4	28-30-32	1.11/16-12	
42242Y4	1.1/2	35-38	2-12	

OCCHIELLO GAS

Per vite filetto gas cilindrico

42..2L./42..24./42..25.

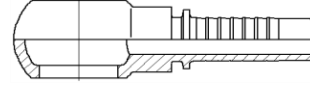


Codice	Øinterno tubo	Filetto G	Netto €/cad.
4203252	3/16	1/4	
4204250	1/4	1/4	
4204252	1/4	3/8	
4205253	5/16	1/4	
4205254	5/16	3/8	
42062L0	3/8	1/4	
4206250	3/8	3/8	
42062L6	3/8	1/2	
4208253	1/2	3/8	
42082L4	1/2	1/2	
4210253	5/8	5/8	
4212249	3/4	3/4	
4216251	1	1	

OCCHIELLO METRICO

Per vite filetto metrico cilindrico

42..2L./42..24./42..25.

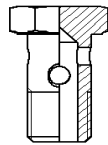


Codice	Øinterno tubo	Filetto M	Netto €/cad.
4203250	3/16	10x1	
4203251	3/16	12x1,5	
4204253	1/4	10x1	
42042L1	1/4	12x1,5	
4204251	1/4	14x1,5	
4205249	5/16	14x1,5	
42052L1	5/16	16x1,5	
42062L2	3/8	14x1,5	
42062L1	3/8	16x1,5	
42062L4	3/8	18x1,5	
42082L0	1/2	18x1,5	
42082L1	1/2	22x1,5	
4210252	5/8	22x1,5	
4212252	3/4	30x2	

VITE CAVA

Filetto gas cilindrico

4500NTV..

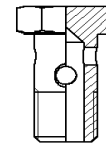


Codice	Filetto G	Netto €/cad.
4500NTV02	1/8	
4500NTV04	1/4	
4500NTV06	3/8	
4500NTV08	1/2	
4500NTV12	3/4	
4500NTV16	1	

VITE CAVA

Filetto metrico cilindrico

45NTV..

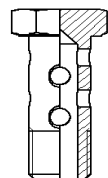


Codice	Filetto M	Netto €/cad.
45NTV0081	8X1	
45NTV0101	10x1	
45NTV1215	12x1,5	
45NTV1415	14x1,5	
45NTV1615	16x1,5	
45NTV1815	18x1,5	
45NTV2215	22x1,5	
45NTV2615	26x1,5	
45NTV3015	30x1,5	

VITE CAVA DOPPIA

Filetto gas cilindrico

4500VRD..

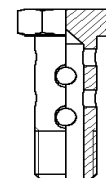


Codice	Filetto G	Netto €/cad.
4500VRD04	1/4	
4500VRD06	3/8	
4500VRD08	1/2	
4500VRD12	3/4	
4500VRD16	1	

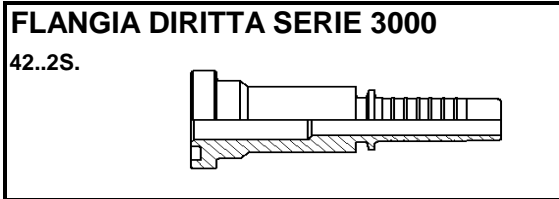
VITE CAVA DOPPIA

Filetto metrico cilindrico

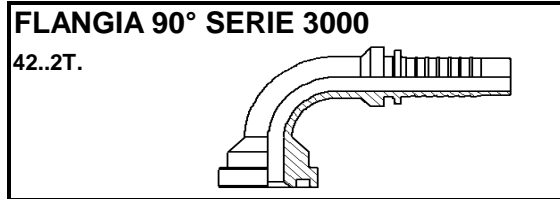
45VRD..



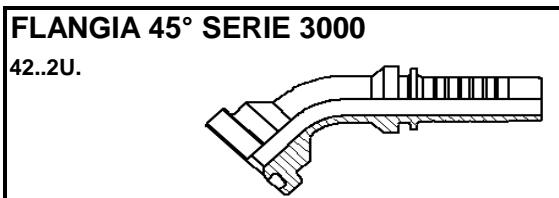
Codice	Filetto M	Netto €/cad.
45VRD0081	8X1	
45VRD0101	10x1	
45VRD1215	12x1,5	
45VRD1415	14x1,5	
45VRD1815	18x1,5	



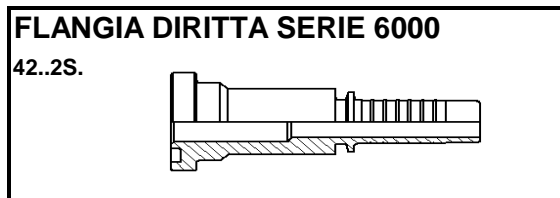
Codice	Ø interno tubo	Ø Flangia		Netto €/cad.
		mm	inch	
42082S0	1/2	30,2	1/2	
42082S1	1/2	38,1	3/4	
42102S0	5/8	38,1	3/4	
42122S0	3/4	38,1	3/4	
42122S1	3/4	44,5	1	
42162S0	1	44,5	1	
42162S1	1	50,8	1.1/4	
42202S0	1.1/4	50,8	1.1/4	
42202S1	1.1/4	60,3	1.1/2	
42242S0	1.1/2	60,3	1.1/2	
42242S1	1.1/2	71,4	2	
42322S0	2	71,4	2	



Codice	Ø interno tubo	Ø Flangia		Netto €/cad.
		mm	inch	
42082T0	1/2	30,2	1/2	
42082T1	1/2	38,1	3/4	
42102T0	5/8	38,1	3/4	
42122T0	3/4	38,1	3/4	
42122T1	3/4	44,5	1	
42162T0	1	44,5	1	
42162T1	1	50,8	1.1/4	
42202T0	1.1/4	50,8	1.1/4	
42202T1	1.1/4	60,3	1.1/2	
42242T0	1.1/2	60,3	1.1/2	
42242T1	1.1/2	71,4	2	
42322T0	2	71,4	2	



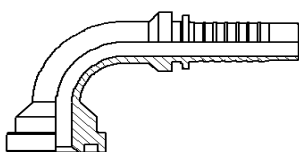
Codice	Ø interno tubo	Ø Flangia		Netto €/cad.
		mm	inch	
42082U0	1/2	30,2	1/2	
42082U1	1/2	38,1	3/4	
42102U0	5/8	38,1	3/4	
42122U0	3/4	38,1	3/4	
42122U1	3/4	44,5	1	
42162U0	1	44,5	1	
42162U1	1	50,8	1.1/4	
42202U0	1.1/4	50,8	1.1/4	
42202U1	1.1/4	60,3	1.1/2	
42242U0	1.1/2	60,3	1.1/2	
42242U1	1.1/2	71,4	2	
42322U0	2	71,4	2	



Codice	Ø interno tubo	Ø Flangia		Netto €/cad.
		mm	inch	
42082S5	1/2	31,7	1/2	
42082S6	1/2	41,3	3/4	
42102S9	5/8	41,3	3/4	
42122S5	3/4	41,3	3/4	
42122S6	3/4	47,6	1	
42162S5	1	47,6	1	
42162S6	1	54	1.1/4	
42202S5	1.1/4	54	1.1/4	
42202S6	1.1/4	63,5	1.1/2	
42242S5	1.1/2	63,5	1.1/2	
42242S6	1.1/2	79,4	2	
42322S5	2	79,4	2	

FLANGIA 90° SERIE 6000

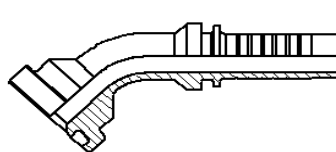
42..2T.



Codice	Ø interno tubo	Ø Flangia		Netto €/cad.
		mm	inch	
42082T5	1/2	31,7	1/2	
42082T6	1/2	41,3	3/4	
42102T6	5/8	41,3	3/4	
42122T5	3/4	41,3	3/4	
42122T6	3/4	47,6	1	
42162T5	1	47,6	1	
42162T6	1	54	1.1/4	
42202T5	1.1/4	54	1.1/4	
42202T6	1.1/4	63,5	1.1/2	
42242T5	1.1/2	63,5	1.1/2	
42242T6	1.1/2	79,4	2	

FLANGIA 45° SERIE 6000

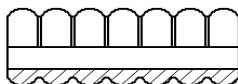
42..2U.



Codice	Ø interno tubo	Ø Flangia		Netto €/cad.
		mm	inch	
42082U5	1/2	31,7	1/2	
42082U6	1/2	41,3	3/4	
42102U5	5/8	41,3	3/4	
42122U5	3/4	41,3	3/4	
42122U6	3/4	47,6	1	
42162U5	1	47,6	1	
42162U6	1	54	1.1/4	
42202U5	1.1/4	54	1.1/4	
42202U6	1.1/4	63,5	1.1/2	
42242U5	1.1/2	63,5	1.1/2	
42322U5	2	79,4	2	

MANOPOLE TUBI IDROPULITRICE GOMMA NERA

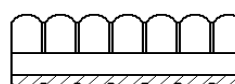
58M..



Codice	Ø interno tubo			Netto €/cad.
58M000004	1/4			
58M000005	5/16			
58M000006	3/8			
58M000008	1/2			

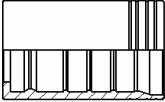
MANOPOLE TUBI IDROPULITRICE GOMMA BLU

58MB..



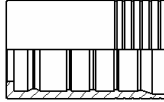
Codice	Ø interno tubo			Netto €/cad.
58MB00004	1/4			
58MB00005	5/16			
58MB00006	3/8			
58MB00008	1/2			

BOCCOLA A PRESSARE INTERLOCK
 PER TUBO 4SP, 4SH, R13
 4163..5/4164..5



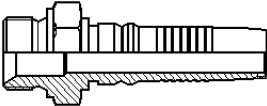
Codice	Øinterno tubo	Tipo tubo			Netto €/cad.
4163125	3/4	4SP	4SH	R13	
4163165	1	4SP	4SH	R13	
4164205	1.1/4		4SH		
4164245	1.1/2		4SH		
4164325	2	4SP	4SH		

BOCCOLA A PRESSARE INTERLOCK
 PER TUBO 4SP, R13
 4163..5



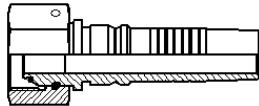
Codice	Øinterno tubo	Tipo tubo			Netto €/cad.
4163205	1.1/4	4SP		R13	
4163245	1.1/2	4SP		R13	
4163325	2			R13	

MASCHIO SV.60° INTERLOCK
 Filetto gas cilindrico
 42..50.



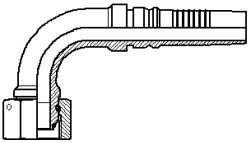
Codice	Øinterno tubo	Filetto G		Netto €/cad.
4212501	3/4	3/4		
4216501	1	1		
4220501	1.1/4	1.1/4		
4224501	1.1/2	1.1/2		
4232501	2	2		

FEMMINA CONO 60° CON DADO GIREVOLE INTERLOCK
 Filetto gas cilindrico
 42..51.



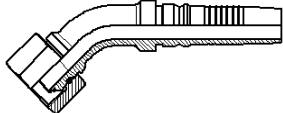
Codice	Øinterno tubo	Filetto G		Netto €/cad.
4212512	3/4	3/4		
4216512	1	1		
4220512	1.1/4	1.1/4		
4224512	1.1/2	1.1/2		
4232512	2	2		

FEMMINA 90° CONO 60° CON DADO GIREV. INTERLOCK
 Filetto gas cilindrico
 42..52.



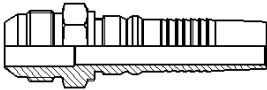
Codice	Øinterno tubo	Filetto G		Netto €/cad.
4212523	3/4	3/4		
4216523	1	1		
4220523	1.1/4	1.1/4		
4224523	1.1/2	1.1/2		
4232523	2	2		

FEMMINA 45° CONO 60° CON DADO GIREV. INTERLOCK
 Filetto gas cilindrico
 42..53.



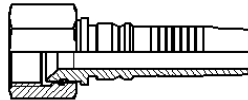
Codice	Øinterno tubo	Filetto G		Netto €/cad.
4212532	3/4	3/4		
4216532	1	1		
4220532	1.1/4	1.1/4		
4224532	1.1/2	1.1/2		
4232512	2	2		

MASCHIO CONO JIC 37° INTERLOCK
 Filetto UNF/UN
 42..50.



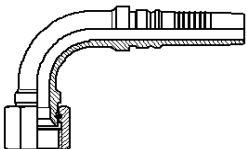
Codice	Ø interno tubo	Ø Tubo mm	Filetto JIC 37°	Netto €/cad.
4212509	3/4	18-20	1.1/16-12	
4216509	1	18-20	1.5/16-12	
4220509	1.1/4	25	1.5/8-12	
4224509	1.1/2	30-32	1.7/8-12	
4232509	2	30-32	2.1/2-12	

FEMMINA CONO JIC 37° CON DADO GIREV. INTERLOCK
 Filetto UNF/UN
 42..52.



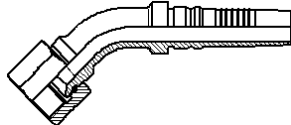
Codice	Ø interno tubo	Ø Tubo mm	Filetto JIC 37°	Netto €/cad.
4212520	3/4	18-20	1.1/16-12	
4216520	1	18-20	1.5/16-12	
4220520	1.1/4	25	1.5/8-12	
4224520	1.1/2	30-32	1.7/8-12	
4232520	2	30-32	2.1/2-12	

FEMMINA 90° CONO JIC 37° CON DADO GIR. INTERLOCK
 Filetto UNF/UN
 42..52.




Codice	Ø interno tubo	Ø Tubo mm	Filetto JIC 37°	Netto €/cad.
4212529	3/4	18-20	1.1/16-12	
4216529	1	18-20	1.5/16-12	
4220529	1.1/4	25	1.5/8-12	
4224529	1.1/2	30-32	1.7/8-12	
4232529	2	30-32	2.1/2-12	

FEMMINA 45° CONO JIC 37° CON DADO GIR. INTERLOCK
 Filetto UNF/UN
 42..53.



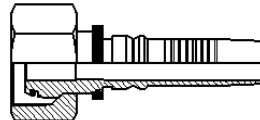
Codice	Ø interno tubo	Ø Tubo mm	Filetto JIC 37°	Netto €/cad.
4212538	3/4	18-20	1.1/16-12	
4216538	1	18-20	1.5/16-12	
4220538	1.1/4	25	1.5/8-12	
4224538	1.1/2	30-32	1.7/8-12	
4232538	2	30-32	2.1/2-12	

MASCHIO CONO 24° SERIE "S" INTERLOCK
 Filetto metrico cilindrico
 42..57.



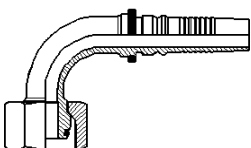
Codice	Ø interno tubo	Ø Tubo mm	Filetto M	Netto €/cad.
R	3/4	20S	30x2	
4212573	3/4	25S	36x2	
4216573	1	30S	42x2	
4220573	1.1/4	38S	52x2	

FEMMINA CONO 24° SERIE "S" CON DADO LIBERO INTERLOCK
 Filetto metrico cilindrico
 42..5D.



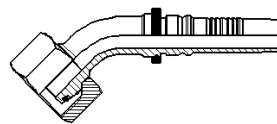
Codice	Ø interno tubo	Ø Tubo mm	Filetto M	Netto €/cad.
R	3/4	20S	30x2	
42125D8	3/4	25S	36x2	
42165D8	1	30S	42x2	
42205D8	1.1/4	38S	52x2	

FEMM. 90° CONO 24° SERIE "S" CON DADO LIBERO INTERLOCK
 Filetto metrico cilindrico
 42..5N.



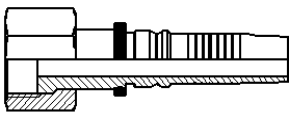
Codice	Ø interno tubo	Ø Tubo mm	Filetto M	Netto €/cad.
R	3/4	20S	30x2	
42125N8	3/4	25S	36x2	
42165N8	1	30S	42x2	
42205N8	1.1/4	38S	52x2	

FEMM. 45° CONO 24° SERIE "S" CON DADO LIBERO INTERLOCK
 Filetto metrico cilindrico
 42..5Q.



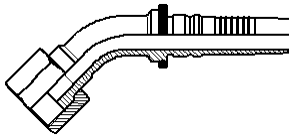
Codice	Ø interno tubo	Ø Tubo mm	Filetto M	Netto €/cad.
R	3/4	20S	30x2	
42125Q8	3/4	25S	36x2	
42165Q8	1	30S	42x2	
42205Q8	1.1/4	38S	52x2	

FEMMINA ORFS CON DADO LIBERO INTERLOCK
 Filetto UNF/UN
 42..5Y.



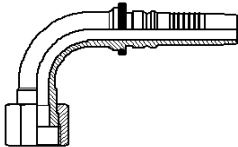
Codice	Ø interno tubo	Ø Tubo mm	Filetto ORFS	Netto €/cad.
42125Y0	3/4	18-20	1.3/16-12	
42165Y0	1	28-30-32	1.7/16-12	
42205Y0	1.1/4	28-30-32	1.11/16-12	
R	1.1/2	35-38	2-12	

FEMMINA 45° ORFS CON DADO LIBERO INTERLOCK
 Filetto UNF/UN
 42..5Y.



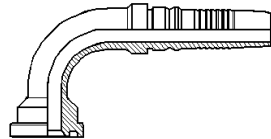
Codice	Ø interno tubo	Ø Tubo mm	Filetto ORFS	Netto €/cad.
42125Y7	3/4	18-20	1.3/16-12	
42165Y7	1	28-30-32	1.7/16-12	
42205Y7	1.1/4	28-30-32	1.11/16-12	
R	1.1/2	35-38	2-12	

FEMMINA 90° ORFS CON DADO LIBERO INTERLOCK
 Filetto UNF/UN
 42..5Y.



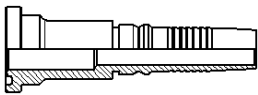
Codice	Ø interno tubo	Ø Tubo mm	Filetto ORFS	Netto €/cad.
42125Y4	3/4	18-20	1.3/16-12	
42165Y4	1	28-30-32	1.7/16-12	
42205Y4	1.1/4	28-30-32	1.11/16-12	
R	1.1/2	35-38	2-12	

FLANGIA 90° SERIE 3000 INTERLOCK
 42..5T.



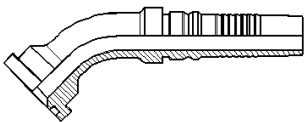
Codice	Ø interno tubo	Ø Flangia		Netto €/cad.
		mm	inch	
42125T0	3/4	38,1	3/4	
42125T1	3/4	44,5	1	
42165T0	1	44,5	1	
42165T1	1	50,8	1.1/4	
42205T0	1.1/4	50,8	1.1/4	
42205T1	1.1/4	60,3	1.1/2	
42245T0	1.1/2	60,3	1.1/2	
42325T0	2	71,4	2	

FLANGIA DIRITTA SERIE 3000 INTERLOCK
 42..5S.



Codice	Ø interno tubo	Ø Flangia		Netto €/cad.
		mm	inch	
42125S0	3/4	38,1	3/4	
42125S1	3/4	44,5	1	
42165S0	1	44,5	1	
42165S1	1	50,8	1.1/4	
42205S0	1.1/4	50,8	1.1/4	
42205S1	1.1/4	60,3	1.1/2	
42245S0	1.1/2	60,3	1.1/2	
42325S0	2	71,4	2	

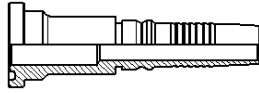
FLANGIA 45° SERIE 3000 INTERLOCK
 42..5U.



Codice	Ø interno tubo	Ø Flangia		Netto €/cad.
		mm	inch	
42125U0	3/4	38,1	3/4	
42125U1	3/4	44,5	1	
42165U0	1	44,5	1	
42205U0	1.1/4	50,8	1.1/4	
42205U1	1.1/4	60,3	1.1/2	
42245U0	1.1/2	60,3	1.1/2	
42325U0	2	71,4	2	

FLANGIA DIRITTA SERIE 6000 INTERLOCK

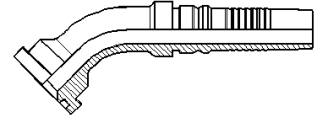
42..5S.



Codice	Ø interno tubo	Ø Flangia		Netto €/cad.
		mm	inch	
42125S5	3/4	41,3	3/4	
42125S6	3/4	47,6	1	
42165S5	1	47,6	1	
42165S6	1	54	1.1/4	
42205S5	1.1/4	54	1.1/4	
42205S6	1.1/4	63,5	1.1/2	
42245S5	1.1/2	63,5	1.1/2	
42325S5	2	79,4	2	

FLANGIA 45° SERIE 6000 INTERLOCK

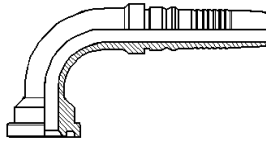
42..5U.



Codice	Ø interno tubo	Ø Flangia		Netto €/cad.
		mm	inch	
42125U5	3/4	41,3	3/4	
42125U6	3/4	47,6	1	
42165U5	1	47,6	1	
42165U6	1	54	1.1/4	
42205U5	1.1/4	54	1.1/4	
42205U6	1.1/4	63,5	1.1/2	
42245U5	1.1/2	63,5	1.1/2	
42325U5	2	79,4	2	

FLANGIA 90° SERIE 6000 INTERLOCK

42..5T.



Codice	Ø interno tubo	Ø Flangia		Netto €/cad.
		mm	inch	
42125T5	3/4	41,3	3/4	
42125T6	3/4	47,6	1	
42165T5	1	47,6	1	
42165T6	1	54	1.1/4	
42205T5	1.1/4	54	1.1/4	
42205T6	1.1/4	63,5	1.1/2	
42245T5	1.1/2	63,5	1.1/2	
42325T5	2	79,4	2	



NORD FLUID

NORD FLUID SpA

Via Giovanni Verga, 80
10036 Settimo Torinese (TO)

Tel. +39 011 8975036

Fax +39 011 8968979

info@nordfluid.it

www.nordfluid.it