

Service Data

Vickers®

Vane Pumps



Vane Type Single Pump

(F3)-V10(*) Series -10 & 20 Designs

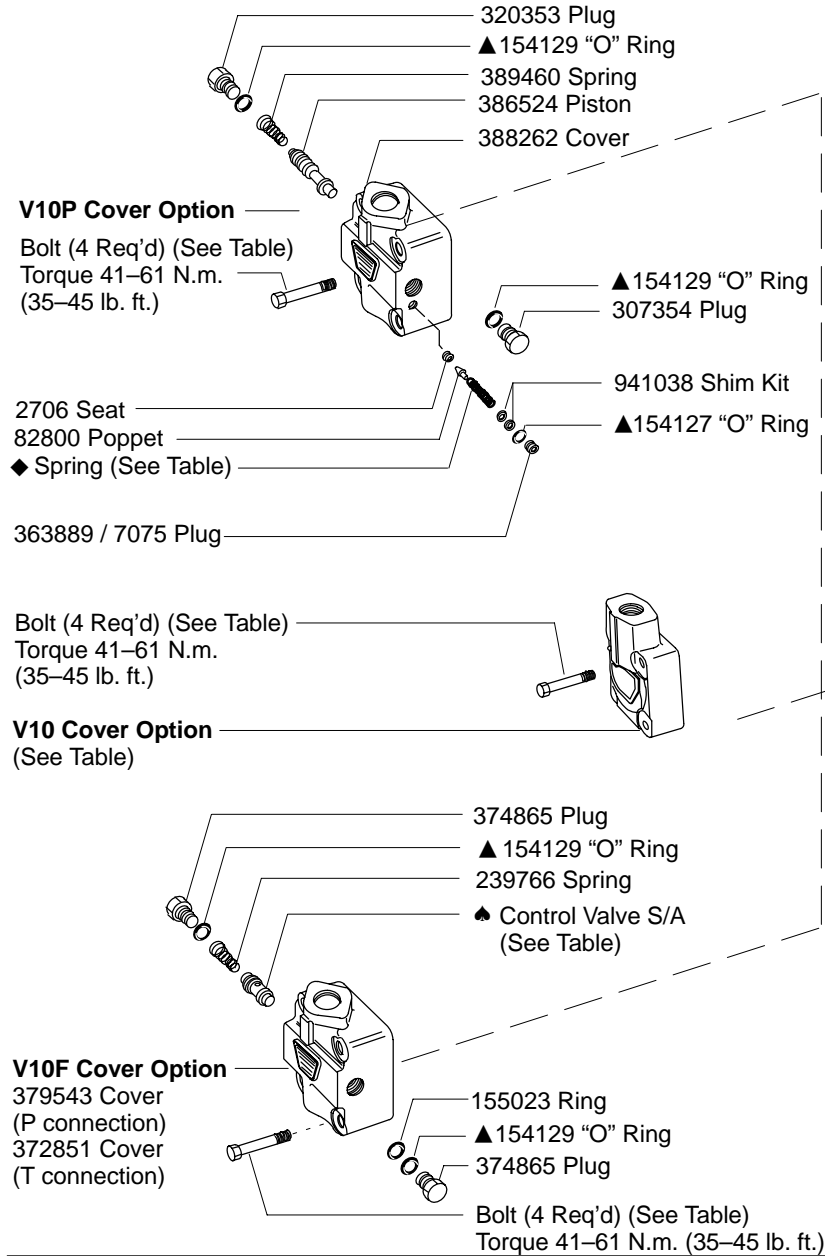


Revised 05-01-87

M-2005-S

SAE rated capacity (V10/F/P cartridge kits)

USgpm	○Rotor	○Vane Kit	○Ring	Pin (V10)	Pin (V10F/V10P)	Bolt (V10)	Bolt (V10F)	Bolt (V10P)	○Cart. Kit
1	317681	923499	317674	2460	231042	11156	432509	295344	923471
2			317675						923470
3			317676						923496
4	351247	923500	317677	39640	2456	1278	295344	432511	923469
5			317678						923468
6	357286	923501	355641	16662	351963		432511	295346	923497
7			331813						923498



Cover port connections

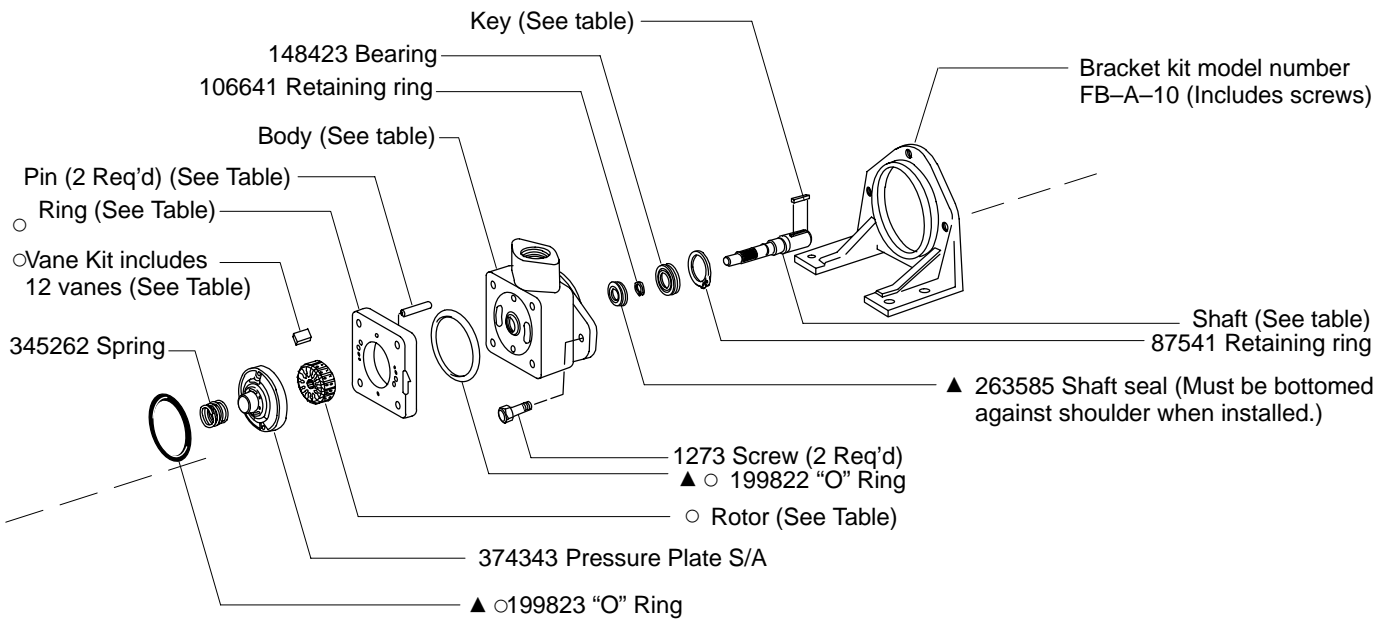
Code	V10 cover	V10F cover	V10P cover
P	372863	379543	—
R	372864	—	—
S	372865	—	—
Y	377829	—	—
T	—	372851	—
K	—	—	388262

Pressure setting – V10P/V10F (Omit for V10)

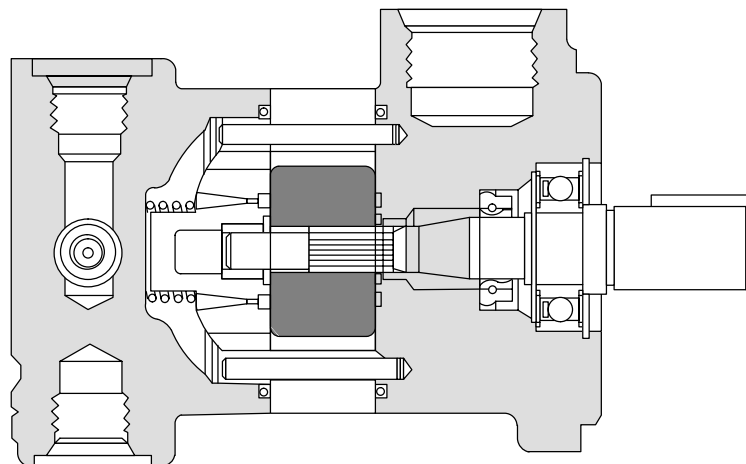
Code	Pressure setting V10P/V10F	◆ V10P Spring	▲ V10F control S/A
A	250 PSI	252886	229613
B	500 PSI	2280	233018
C	750 PSI		232794
D	1000 PSI	2282	232795
E	1250 PSI		232796
F	1500 PSI		232797
G	1750 PSI	2281	232798
H	2000 PSI		232799
J	2250 PSI		233019
K	2500 PSI		233020

- Included in V10 cartridge kit.
- ▲ Included in seal kit 923548
F3 equivalent seal kit 919772

Model	Body
V10-*F**_**-20	574164
V10-*P**_**-20	352699
V10-*S**_**-20	317668
V10-*T**_**-10	370468

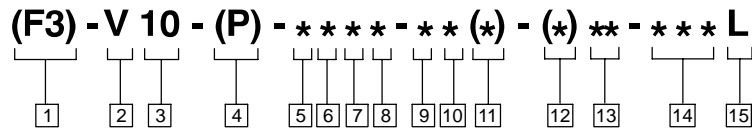


Model	Shaft	Key	Nut	Shaft type
V10-****-1	374338	142843	—	Straight
V10-****-3	374340	1605	8948	Theaded
V10-****-4	378959	1606	8948	Theaded
V10-****-6	382250	1609	—	Straight
V10-****-11	374339	—	—	Splined
V10-****-12	375480	—	—	Splined
V10-****-27	380281	—	—	Tang
V10-****-34	375485	—	—	Theaded
V10-****-38	387481	—	—	Splined



Typical Cutaway View

Model Code



1 Special seals

F3 – Special “O”Rings & seals for mineral oil & fire resistant fluid

2 Vane Pump

3 Series 10

4 Pump cover options

F – Flow control cover
P – Priority valve cover
Omitted – Standard cover

5 Mounting

1 – 2 Bolt flange (SAE “A” size)
2 – Foot bracket at 12 O’Clock (Viewed from shaft end)
23 – Foot bracket at 3 O’Clock
26 – Foot bracket at 6 O’Clock
29 – Foot bracket at 9 O’Clock

6 Inlet port connections

F – 1.156 DIS. port
H – 1” O.D. tube connection
K – 1 5/16–12 UN 2B thread
P – 1” NPT thread
S – 1 5/16–12 straight thread
T – 1 3/16–12 straight thread

7 SAE rated ring capacity USGPM (1200 RPM – 100 PSI)

1 – 1 USgpm	5 – 5 USgpm
2 – 2 USgpm	6 – 6 USgpm
3 – 3 USgpm	7 – 7 USgpm
4 – 4 USgpm	

8 Outlet port connections

V10 standard cover

K – 1 5/16–12 UN 2B thread
P – 1” NPT thread
S – 1 5/16–12 straight thread
T – 1 3/16–12 straight thread

V10F Flow control cover

Pressure

P – 3/4–16 straight thread
T – 3/4–16 straight thread

Tank

P – 1/2” NPT thread
T – 3/4–16 straight thread

V10P Priority valve cover

Primary outlet

K – 9/16–18 straight thread

Secondary outlet

K – 3/4–16 straight thread

Tank

K – 9/16–18 straight thread

9 Shaft types

1 – Straight-keyed
3 – Threaded
4 – Threaded
6 – Straight stub-keyed
11 – Spline–9 tooth
12 – Spline–13 tooth
27 – Tang
34 – Threaded
38 – Spline–13 tooth

10 Pressure port positions (Viewed from cover end)

A – Opposite inlet
B – 90° CCW from inlet
C – Inline with inlet
D – 90° CCW from inlet

11 Flow rate in USGPM through orifice in cover

1 – 1 USGPM (V10P)
2 – 2 USGPM (V10F)

12 Pressure setting ,V10F & V10P (Omit for standard cover)

Code	Code
A – 250 psi	F – 1500 psi
B – 500 psi	G – 1750 psi
C – 750 psi	H – 2000 psi
D – 1000 psi	J – 2250 psi
E – 1250 psi	K – 2500 psi

13 Design & Modification

14 Special feature suffix

15 Rotation (Viewed from shaft end of pump)

L – Left hand for counterclockwise