

Service Data

Vickers®

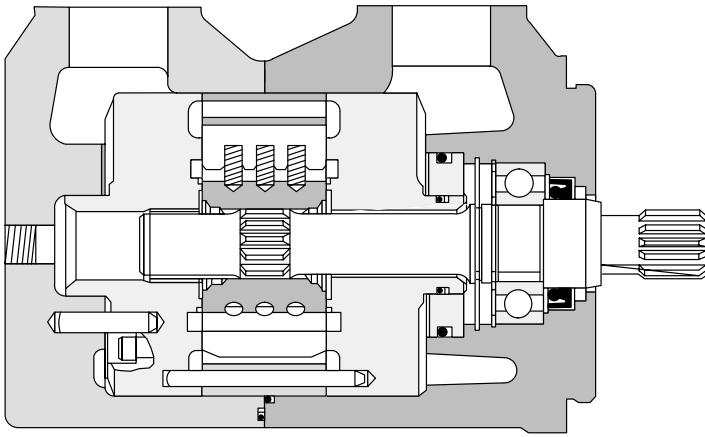
Vane Motors



Vane Motors

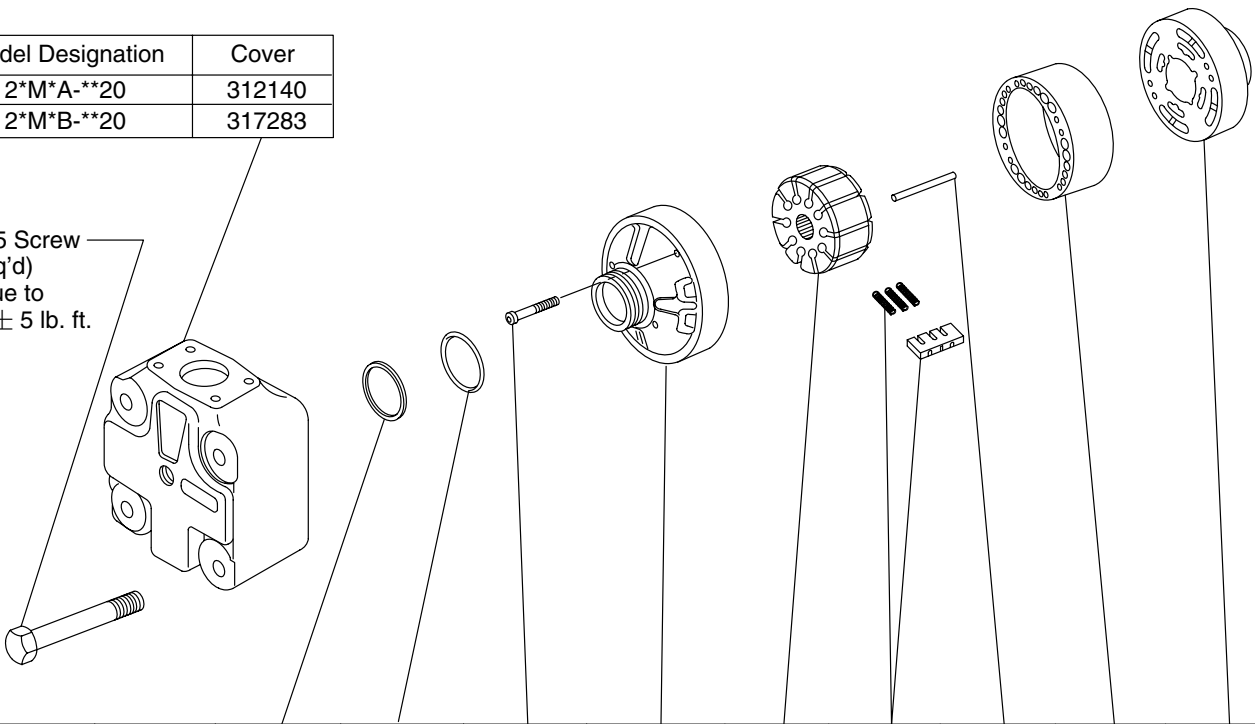
25M & 26M Series
-20 Design





| Model Designation | Cover |
|-------------------|--------|
| 2*M*A-**20 | 312140 |
| 2*M*B-**20 | 317283 |

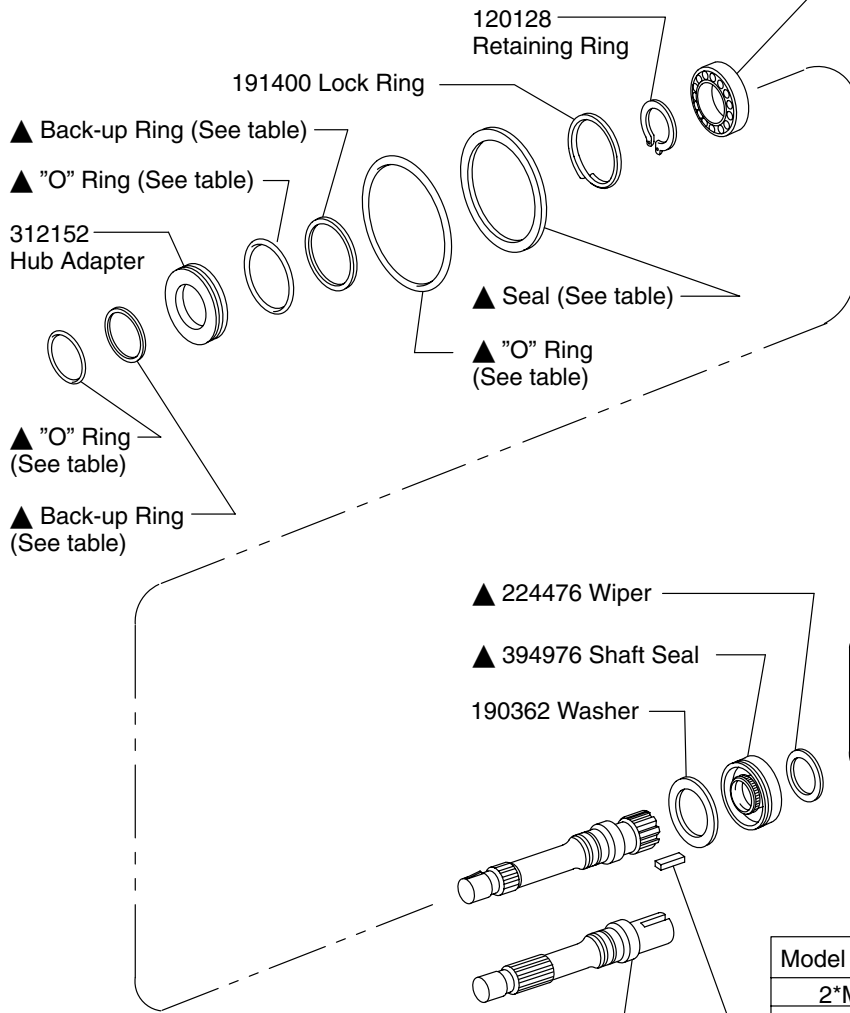
11165 Screw
(4 req'd)
Torque to
100 ± 5 lb. ft.



| Model Designation | Cartridge Kit | Back-up Ring | "O" Ring | Screw (2req'd) Torque to 2-4 lbf. ft. | Pressure Plate S/A (Including Bushing and Pins) | Rotor | Vane Kit 10 Vanes 30 Springs | Pin (2 req'd) | Ring | Pressure Plate |
|-------------------|---------------|--------------|----------|--|---|--------|------------------------------------|---------------|--------|----------------|
| 2*M42*-**20 | 923160 | | | | | | | | 313426 | |
| 2*M55*-**20 | 923161 | ▲ 271699 | ▲ 187000 | 276618 | 312145 | 312155 | 923158 | 158465 | 313427 | 312143 |
| 2*M65*-**20 | 923162 | | | | | | | | 313428 | |

These parts are services in Cartridge Kit

| Model Designation | Bearing |
|-------------------|---------|
| 25M**-**20 | 1705 |
| 26M**-**20 | 232750 |



| Screw (2 req'd) | Mounting Bracket (Incl. Screws) | Model |
|-------------------------|---------------------------------|--------------|
| 199740 | FB-B-10 | 2*M**()-**20 |
| (Viewed from Shaft End) | | |
| 2 | Body Port @ 12 O'clock Position | |
| 3 | Body Port @ 3 O'clock Position | |
| 6 | Body Port @ 6 O'clock Position | |
| 9 | Body Port @ 9 O'clock Position | |

| Model Designation | Body |
|-------------------|--------|
| 2*M*A-**20 | 312139 |
| 2*M*B-**20 | 317282 |

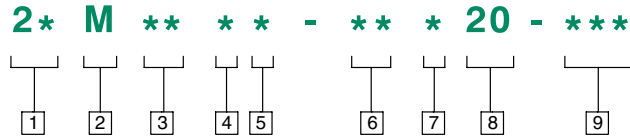
| Model Designation | Shaft | Key |
|-------------------|--------|------|
| 2*M**-1*20 | 312153 | 9955 |
| 2*M**-3*20 | 431243 | |
| 2*M**-11*20 | 312154 | — |

| Model Designation | Cartridge Kit | "O" Ring | Back-up Ring | "O" Ring | Back-up Ring | "O" Ring | Seal |
|-------------------|---------------|----------|--------------|----------|--------------|----------|---------|
| 2*M42**-**20 | 923160 | | | | | | |
| 2*M55**-**20 | 923161 | ▲187000 | ▲271699 | ▲154080 | ▲271791 | ▲312388 | ▲278708 |
| 2*M65**-**20 | 923162 | | | | | | |

These parts are serviced in Cartridge Kit

▲ Service all units with F3 Seal Kit 923157

Model Code



1 Model Series

- 25** - Standard bearing
- 26** - Heavy duty bearing

2 Vane Motor

M

3 Ring Capacity Torque

Rating (lbf. in per 100 PSI)

- 25** - 25
- 30** - 30
- 35** - 35
- 42** - 42
- 55** - 55
- 65** - 65

4 Port Connections

- A** - 4 bolt flange
- B** - Str. thread

5 Bracket Mounting

(Viewed from shaft end)

- 2** - Body port @ 12 o'clock
- 3** - Body port @ 3 o'clock
- 6** - Body port @ 6 o'clock
- 9** - Body port @ 9 o'clock

6 Shaft Type

- 1** - Straight keyed
- 3** - Straight threaded
- 11** - Splined

7 Port Locations

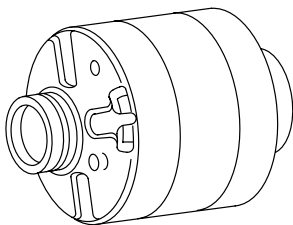
(Viewed from cover end)

- A** - Cover port opposite body port
- B** - Cover port 90° CCW from body port
- C** - Cover port in line with body port
- D** - Cover port 90° CW from body port

8 Design Number

20

9 Special Features



When ordering spare cartridge parts, it is recommended they be obtained in cartridge kits. Kits are assembled and tested before shipment.

For satisfactory service life of these components in industrial applications, use full flow filtration to provide fluid which meets ISO cleanliness code 20/18/15 or cleaner. Selections from Vickers OFF, OFR, and OFRS series are recommended.